

The Smart Farming team examined soil fertility, energy use, grassland management, water use, feed, inputs, waste, time and machinery management on Andrew's farm and identified savings of **€9,025**



FEED

- Better use of animal feed by adjusting feeders to rectify incorrect quantities being fed in the parlour leading to wastage.
- Increase DMD of silage and reduce concentrate supplementation
- 1 week earlier turnout of stock

GRASSLAND

- Reseed 37 acres of grass.
- Target 51,162kg extra milk from increased grass production.

INPUTS & WASTE

- Reduction of collected surface water
- Proper Collection & Storage of Chemicals etc
- Wilting of Silage – reduce disposal costs
- Correct and Safe Disposal of Hazardous materials

SOIL FERTILITY

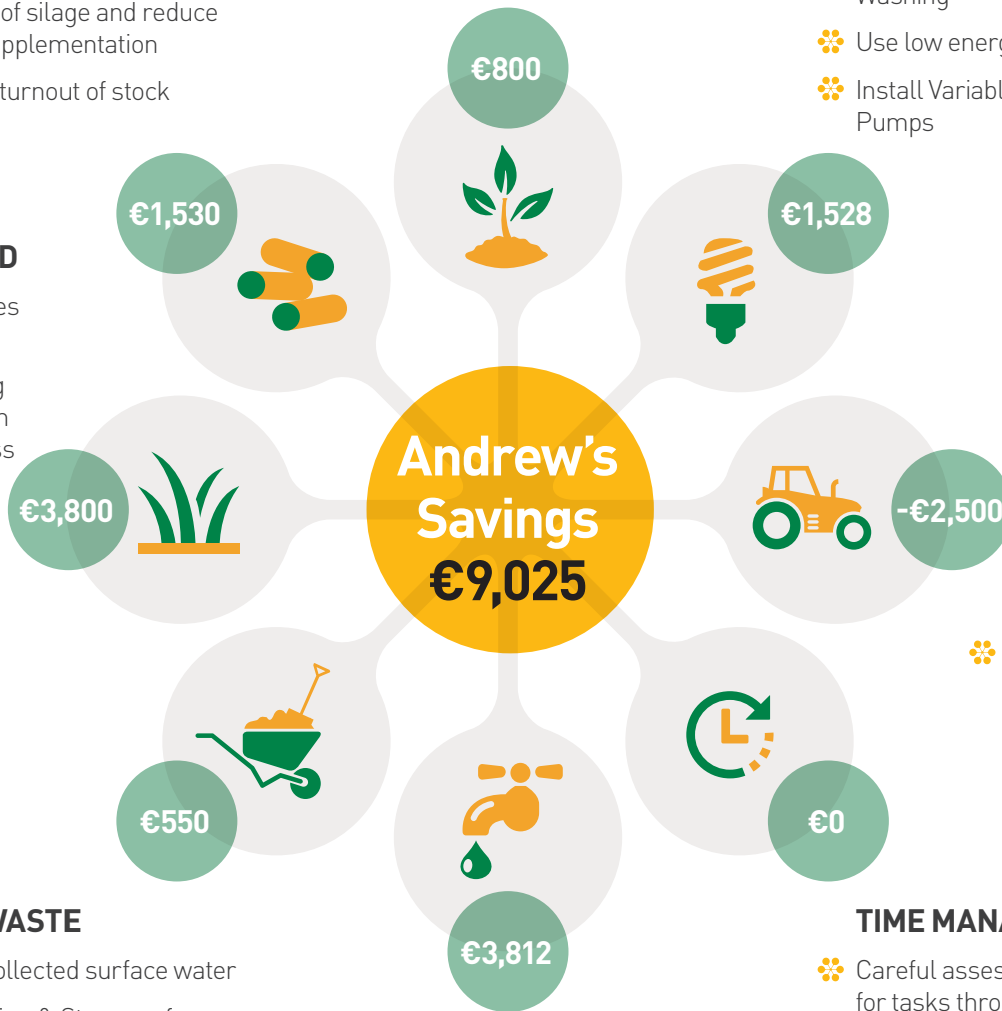
- Soil Sampling Farm and tailored fertiliser requirements.
- Reduce amount of fertilizer used. (chemical P)

ENERGY

- Maximise plate cooler
- Compare electricity suppliers.
- Reduce Hot Water Usage for Washing
- Use low energy bulbs in lights.
- Install Variable Speed Vacuum Pumps

MACHINERY

- An allowance must be made to replace older machinery; this is currently not in the budget.



WATER

- Target 10% increase in milk yield by adding 10 extra water troughs.
- Fitting Solenoid Switch on Plate Cooler to reduce water usage

TIME MANAGEMENT

- Careful assessment of time taken for tasks throughout the year.
- Contract out tasks to concentrate time on milking, grassland management and cow care.